



An Introduction to SmartPlant Explorer

Frank Pitts, Intergraph

SmartPlant® Explorer

SmartPlant Explorer is your solution for viewing, querying, and reporting on data generated by [SmartPlant P&ID](#), [SmartPlant Electrical](#), and [SmartPlant Instrumentation](#) (powered by INtools®) design applications in the familiar Web browser. SmartPlant Explorer enables you to set roles to make only specific data available to certain groups of people. Plus, it is possible to define shortcuts or favorites to access data in a single step.

SmartPlant Explorer gathers live data from SmartPlant Enterprise Engineering & Schematics solutions and ensures access to the latest data to enable faster, more accurate decision-making.

SmartPlant® Explorer

In addition, the user can navigate across tasks. For example, users can select a control valve on the P&ID and view the specification sheet which comes from the SmartPlant Instrumentation environment without having to open SmartPlant Instrumentation.

SmartPlant Explorer turns design data into information that fits your needs and work processes. The software provides a "common user experience" for all supported applications, enabling you to navigate through and report on SmartPlant P&ID and SmartPlant Instrumentation data.

SmartPlant® Explorer

Using a familiar Microsoft® Windows interface, SmartPlant Explorer will also allow you to link to and view related documents, such as maintenance work orders; vendor specifications; CAD drawings created with AutoCAD, MicroStation®, or [SmartSketch®](#), and more.

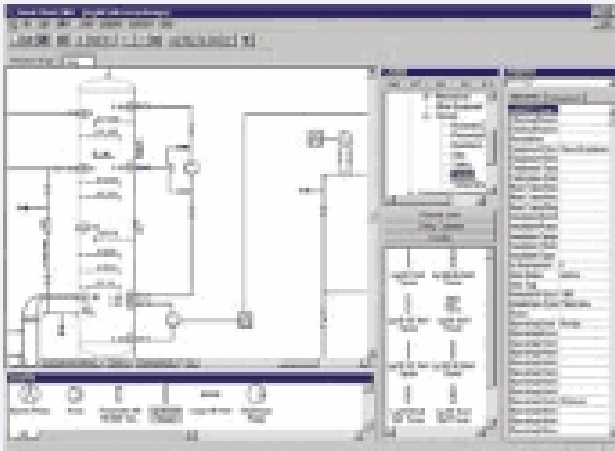
Microsoft Internet Explorer is the only client requirement for complete use of SmartPlant Explorer. With no need for special training, you can enjoy immediate productivity with the familiar Internet Explorer interface.

SmartPlant® Explorer for Plant Owners

- **Save time and avoid the cost of lost production by providing easy access to plant information.** Whether you need to perform routine or emergency maintenance, make facility modifications to comply with regulatory changes, or assemble work packages for a planned shutdown, SmartPlant Explorer makes all of the plant information, documents, and drawings pertaining to the facility readily accessible in the right context.
- **Support regulatory compliance.** Quickly access accurate plant and regulatory information to save time and money.
- **Ease navigation across engineering tasks.** SmartPlant Explorer provides ease of integration and navigation from one application to another, providing access to P&IDs, instrumentation data, and associated data.
- **Reduce the cost of software and training.** SmartPlant Explorer is inexpensive to own and maintain, and does not require training or client-side installation of software.
- **Call external applications through customizing Web calls.**

SmartPlant® Explorer for EPCs

- **Make the right decisions faster.** Reduce the amount of time spent searching for data, resulting in tighter project schedules and lower project costs, thanks to simultaneous, real-time access to project data at its source.
- **Improve communication with upstream and downstream tasks.** Enable other disciplines to view design data without paper document distribution. This eliminates the possibility of using out-of-date information.
- **Enhance design-checking procedures** for global worksharing. JV partners can review designs that form the basis of their scope of work.



SmartPlant® Explorer for Construction

- **Support construction processes** by improving communication with engineering, making project information readily available to all parties involved.
- **Streamline the entire work process**, and the creation of work packets.
- **Improve two-way communication** using the Web and e-mail, and eliminate the costs of sending information by way of overnight packages.
- **Support scheduling, management, and execution** of multi-location projects with an easily accessible "Web site" for project data

Calendar	Calendar Spri	Calendar Day	Calendar	Calendar Spri	Calendar Day	Calendar	Calendar Spri	Calendar
2007-01-01	01	2007-01-01	01	2007-01-01	01	2007-01-01	01	2007-01-01
2007-01-02	01	2007-01-02	01	2007-01-02	01	2007-01-02	01	2007-01-02
2007-01-03	01	2007-01-03	01	2007-01-03	01	2007-01-03	01	2007-01-03
2007-01-04	01	2007-01-04	01	2007-01-04	01	2007-01-04	01	2007-01-04
2007-01-05	01	2007-01-05	01	2007-01-05	01	2007-01-05	01	2007-01-05
2007-01-06	01	2007-01-06	01	2007-01-06	01	2007-01-06	01	2007-01-06
2007-01-07	01	2007-01-07	01	2007-01-07	01	2007-01-07	01	2007-01-07
2007-01-08	01	2007-01-08	01	2007-01-08	01	2007-01-08	01	2007-01-08
2007-01-09	01	2007-01-09	01	2007-01-09	01	2007-01-09	01	2007-01-09
2007-01-10	01	2007-01-10	01	2007-01-10	01	2007-01-10	01	2007-01-10
2007-01-11	01	2007-01-11	01	2007-01-11	01	2007-01-11	01	2007-01-11
2007-01-12	01	2007-01-12	01	2007-01-12	01	2007-01-12	01	2007-01-12
2007-01-13	01	2007-01-13	01	2007-01-13	01	2007-01-13	01	2007-01-13
2007-01-14	01	2007-01-14	01	2007-01-14	01	2007-01-14	01	2007-01-14
2007-01-15	01	2007-01-15	01	2007-01-15	01	2007-01-15	01	2007-01-15
2007-01-16	01	2007-01-16	01	2007-01-16	01	2007-01-16	01	2007-01-16
2007-01-17	01	2007-01-17	01	2007-01-17	01	2007-01-17	01	2007-01-17
2007-01-18	01	2007-01-18	01	2007-01-18	01	2007-01-18	01	2007-01-18
2007-01-19	01	2007-01-19	01	2007-01-19	01	2007-01-19	01	2007-01-19
2007-01-20	01	2007-01-20	01	2007-01-20	01	2007-01-20	01	2007-01-20
2007-01-21	01	2007-01-21	01	2007-01-21	01	2007-01-21	01	2007-01-21
2007-01-22	01	2007-01-22	01	2007-01-22	01	2007-01-22	01	2007-01-22
2007-01-23	01	2007-01-23	01	2007-01-23	01	2007-01-23	01	2007-01-23
2007-01-24	01	2007-01-24	01	2007-01-24	01	2007-01-24	01	2007-01-24
2007-01-25	01	2007-01-25	01	2007-01-25	01	2007-01-25	01	2007-01-25
2007-01-26	01	2007-01-26	01	2007-01-26	01	2007-01-26	01	2007-01-26
2007-01-27	01	2007-01-27	01	2007-01-27	01	2007-01-27	01	2007-01-27
2007-01-28	01	2007-01-28	01	2007-01-28	01	2007-01-28	01	2007-01-28
2007-01-29	01	2007-01-29	01	2007-01-29	01	2007-01-29	01	2007-01-29
2007-01-30	01	2007-01-30	01	2007-01-30	01	2007-01-30	01	2007-01-30
2007-01-31	01	2007-01-31	01	2007-01-31	01	2007-01-31	01	2007-01-31

Project Name	FLUOR
Page 1 of 3	

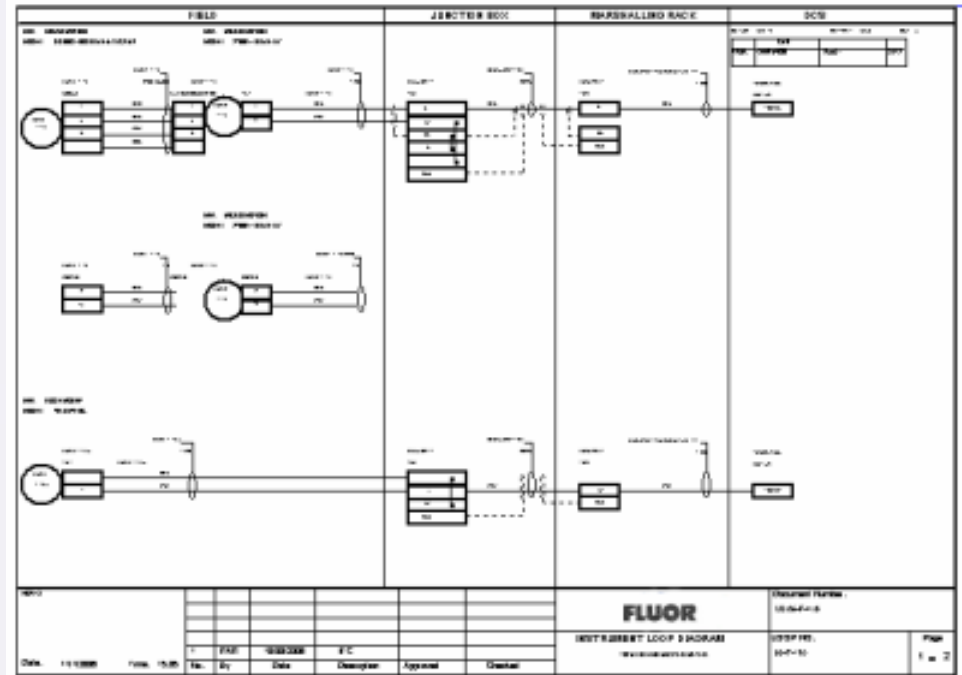
SmartPlant® Explorer Key Features

— Navigate through project data

- Drawings
- Associated documents
- Attribute information
- Design calculations
- Installation reports
- Project standards

— Access to project reports

- Equipment lists
- Instrument lists
- Piping segment reports
- Line lists



SmartPlant® Explorer Key Features

- **Microsoft Windows user interface** – Familiar, intuitive Windows desktop environment for immediate productivity.
- **Microsoft Internet Explorer Web browser** – Point-and-click access to project information using standard drawing elements and everyday user terminology. No additional plug-ins need to be installed.
- **Extensive, easy-to-use on-line help and tutorials** – No formal training is required for experienced Windows users or users of PDS data.
- **Server-side setup only** – Centralizes and reduces administrative effort. This applies to all modules.
- **Project setup and user access control** – Easy-to-follow question and answer dialog setup, with online Help, Setup Wizard, and a Getting Started Guide.
- **Maintenance** – Project setup schedules are executed without administrative assistance.

Presentation of SmartPlant Explorer