

SmartPlant[®]

Instrumentation

Enhanced Smart Report Symbols

FLUOR

SmartPlant[®]

Implementation Team



FLUOR[®]

INTERGRAPH

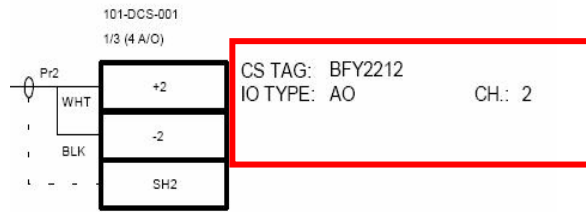


Customizing existing Symbols

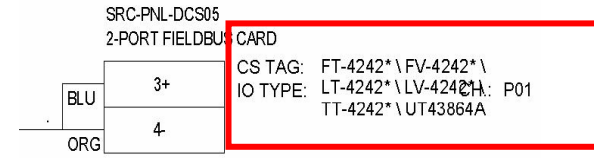
- Any Symbol can be modified to the users needs. In this example we will modify the I/O details to fit our needs.

	CABINET	File	Pos
PRIM	101-DCS-001	File Number 1	3

Equipment Room



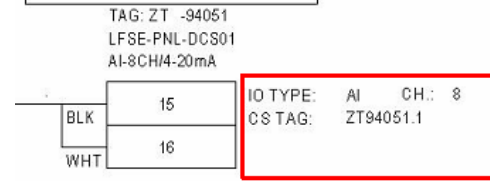
	CABINET	FILE	POS.
PRIM	SRC-PNL-DCS05	SRC-42-CTR-16	SLOT 01
SEC	SRC-PNL-DCS05	SRC-42-CTR-16	SLOT 02



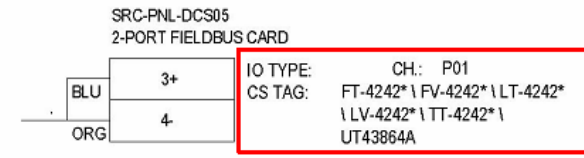
Original Symbols

	CABINET	FILE	POS.
PRIM	LFSE-PNL-DCS01	LFSE-94-CTR-01	SLOT 01

DCS



	CABINET	FILE	POS.
PRIM	SRC-PNL-DCS05	SRC-42-CTR-16	SLOT 01
SEC	SRC-PNL-DCS05	SRC-42-CTR-16	SLOT 02



Modified Symbols



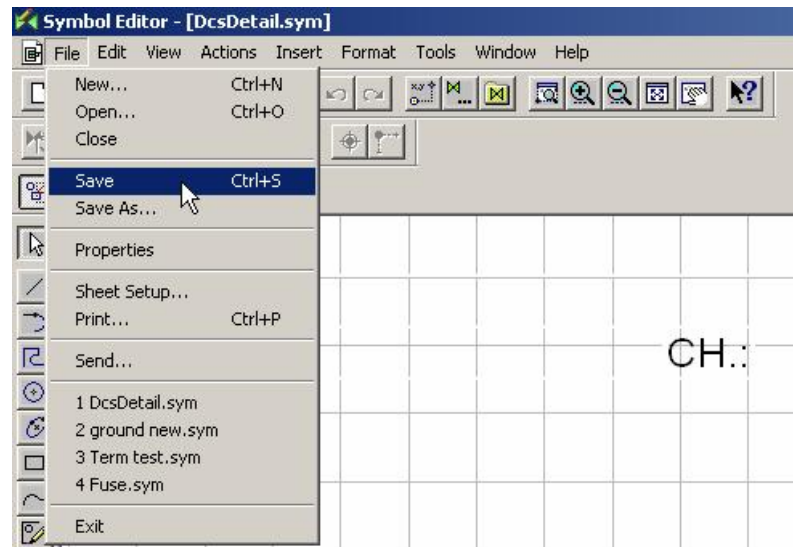
Customizing existing Symbols

- ◆ Once you have selected the items you wish to move, simply move them to their new location.

- ◆ After they are moved, un-highlight the items by clicking an area outside of the object.

Customizing existing Symbols

- ◆ Now select save from the drop down menu at the top and close the Symbol Editor.





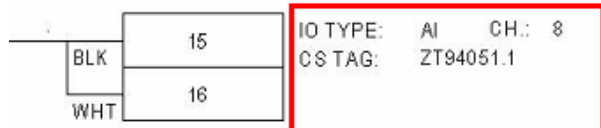
Customizing existing Symbols

- ◆ Check your work. Run the appropriate Enhanced Report to verify that you modified symbol is correct.

	CABINET	FILE	POS.
PRIM	LFSE-PNL-DCS01	LFSE-94-CTR-01	SLOT 01

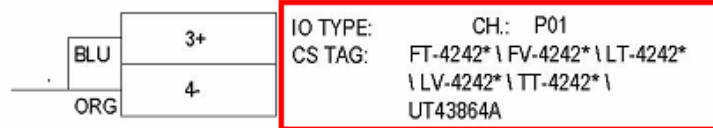
DCS

TAG: ZT -94051
LFSE-PNL-DCS01
AI-8CH/4-20mA



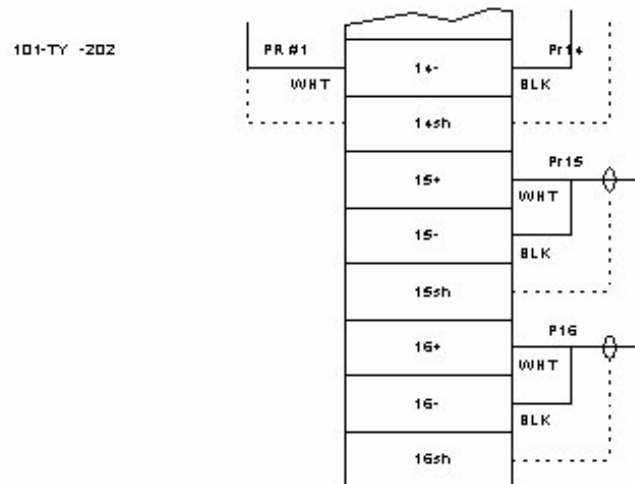
	CABINET	FILE	POS.
PRIM	SRC-PNL-DCS05	SRC-42-CTR-16	SLOT 01
SEC	SRC-PNL-DCS05	SRC-42-CTR-16	SLOT 02

SRC-PNL-DCS05
2-PORT FIELDBUS CARD



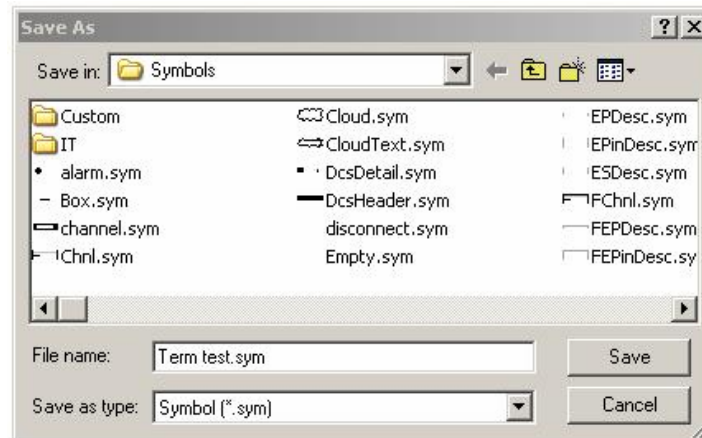
Creating new Symbols

- ◆ In this example we are going to create a new Ground symbol to add to the last terminal in the below image.



Creating new Symbols

- ◆ All Symbols have an “anchor point”. This is a point that determines where the symbol will be placed on the drawing. When creating new symbols, try to use existing symbols to help build the new symbol. This is because you can use the existing anchor point to help determine where the new symbol will be created.
- ◆ In this example, we will use the existing symbol Term.sym as the go by. As always, create a copy of the file you are going to work with, by opening it and saving it as a new file. Lastly, close the Symbol Editor.



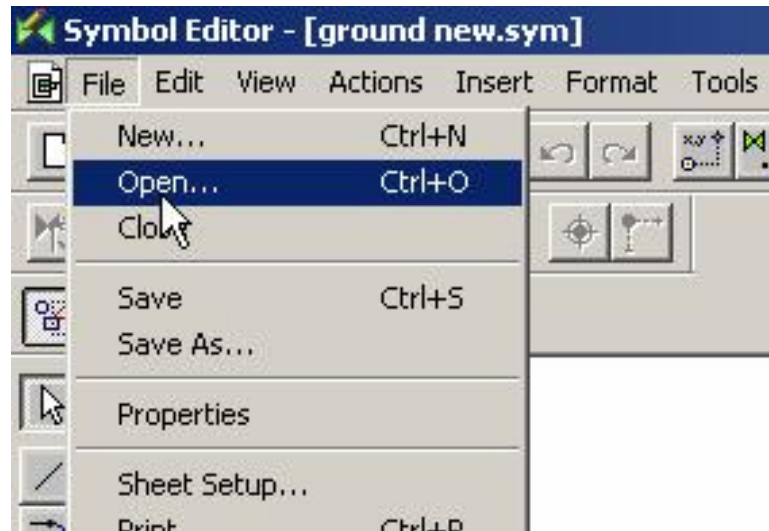
Creating new Symbols

- ◆ Creating New Symbols is NOT the same as modifying Symbols. To create new Symbols, you will need to have SPI and the Wiring module open. You then select Tools/Symbol Editor.
 - NOTE: You can NOT open the Symbol Editor if Enhanced Report Utility is open.



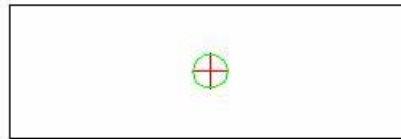
Creating new Symbols

- ◆ Once the Symbol Editor is open, you can then open the file you copied previously. Go to File/open, navigate to the correct folder and select the file you copied earlier.



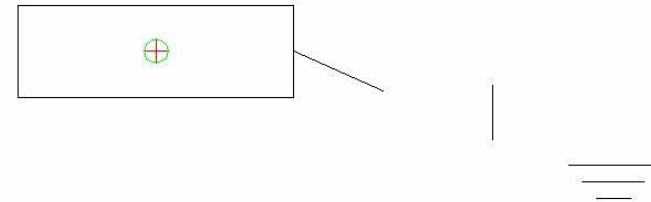
Creating new Symbols

- ◆ Once the file is open, notice that there is a circle with a crosshair. This is the anchor point of the symbol.



Creating new Symbols

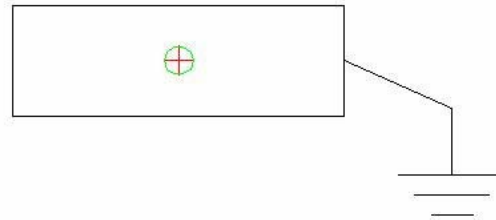
- ◆ Using the Draw functions from the Symbol Editor, start drawing the new ground symbol.



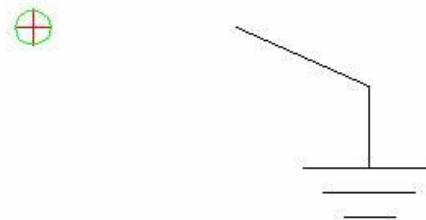
Creating new Symbols



- ◆ Assemble the new symbol and place it on the terminal.

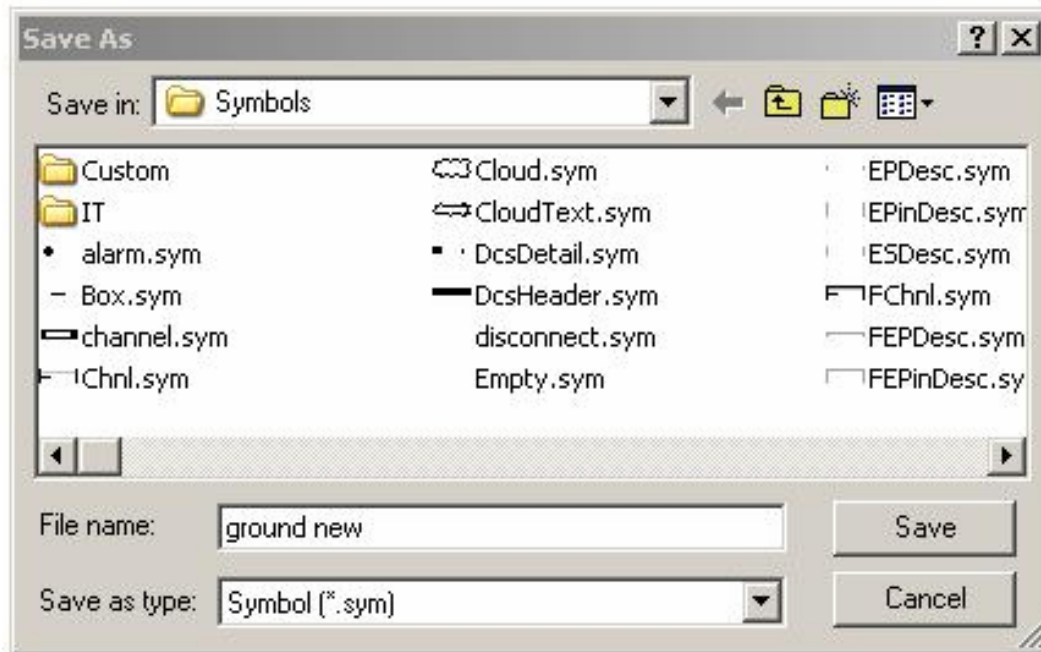


- ◆ Now Delete the terminal by selecting the lines and either hitting delete on your keyboard or right clicking and selecting delete.



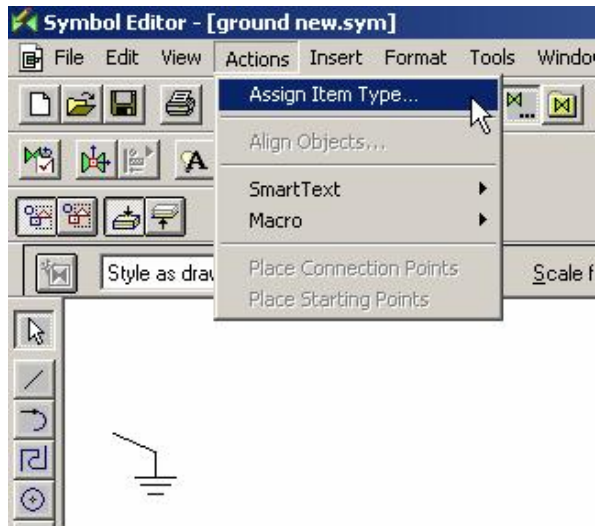
Creating new Symbols

- ◆ Once the anchor point has been selected a Save As dialog box will appear. Select the file path and name that you wish to save your new Symbol.

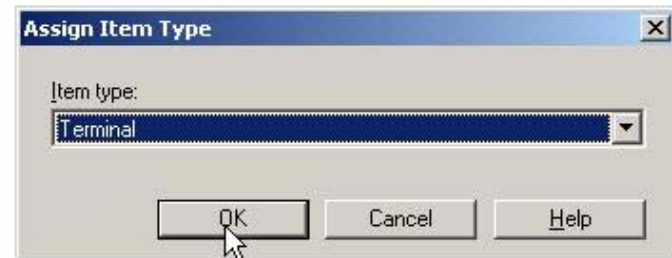


Creating new Symbols

- ◆ After saving your new Symbol, you will need to Assign the Item Type. Select Actions/Assign Item Type.



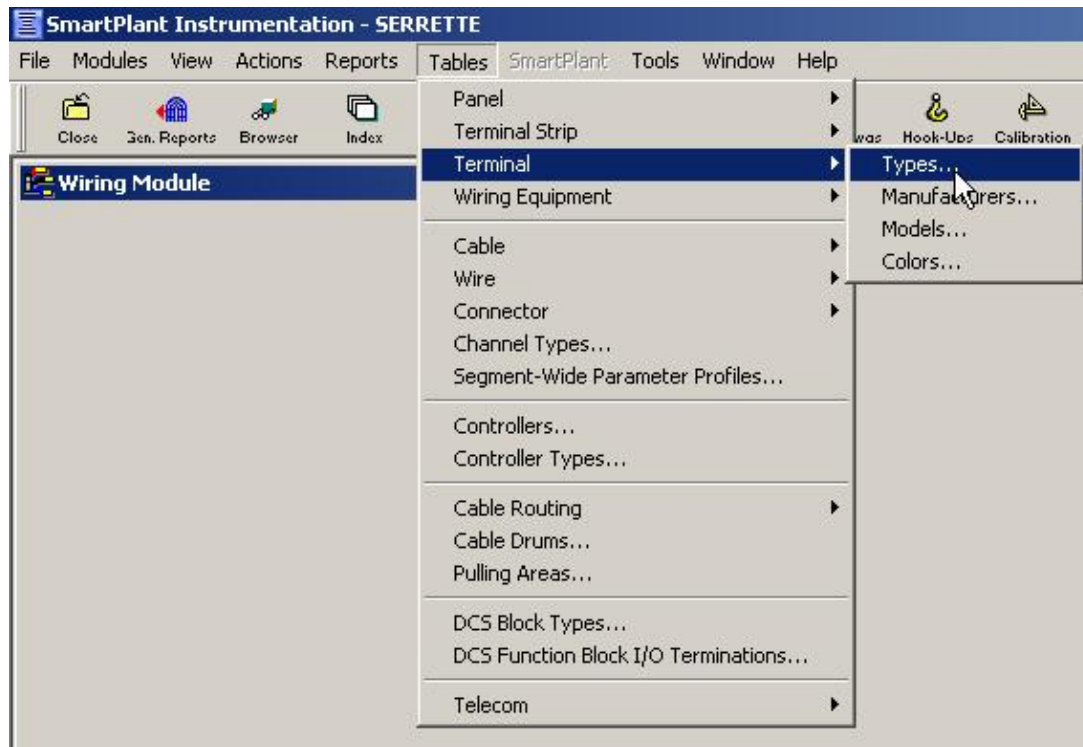
- ◆ Select the appropriate Item Type. In this example, use Terminal.



- ◆ Save the file and close the Symbol Editor.

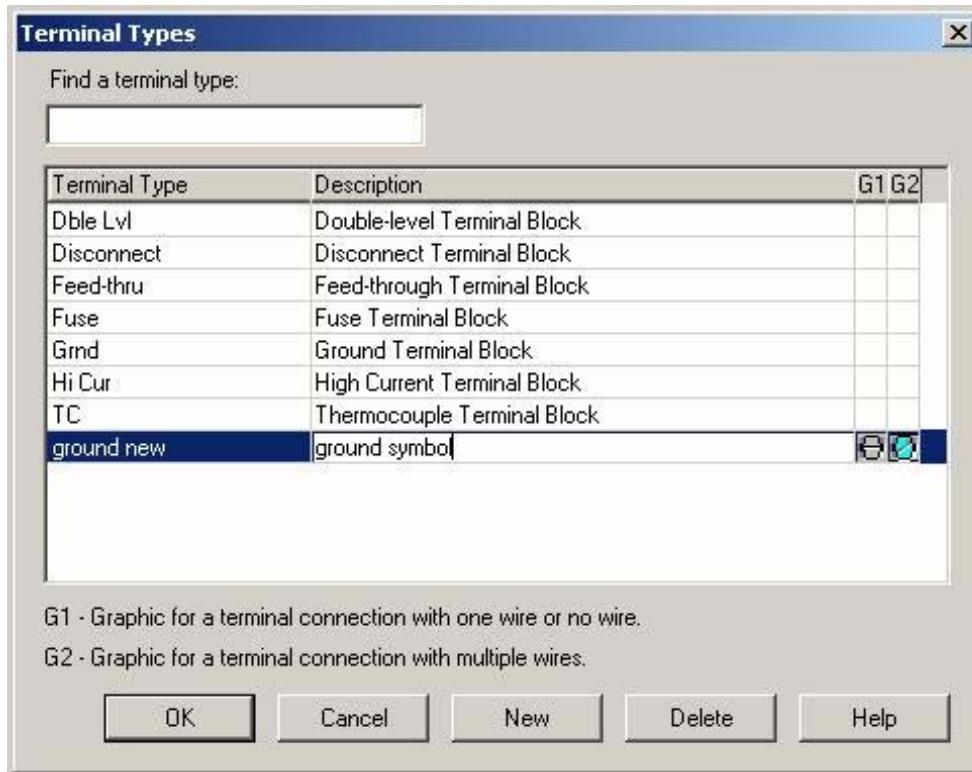
Creating new Symbols

- ◆ Create a new Terminal type in order to use the new Symbol. From the Wiring module, select Table/Terminal/Types.



Creating new Symbols

- ◆ Select New and type in the name of the new Symbol. This name must match the name of the symbol file EXACTLY.



- ◆ Click OK to close this window.

Creating new Symbols

- ◆ Assign the new Terminal type by selecting the Terminal and right clicking from properties.

The screenshot shows the 'Terminal Properties' dialog box with the 'Associate Symbols' tab selected. The 'Terminal configuration' is set to 'Regular', the 'Terminal' is 'OAS', and the 'Right terminal' is empty. The 'Sequence' is '73', the 'Terminal color' is empty, and the 'Right terminal color' is empty. The 'Panel' is '12PS-JB-I12' and the 'Terminal strip' is '12PS-I12-1'. The 'Details' section shows the 'Channel' is empty, the 'Type' is set to 'Dble Lvl', the 'Manufacturer' is empty, and the 'Model' is empty. The 'OK', 'Cancel', 'Delete', and 'Help' buttons are visible at the bottom.

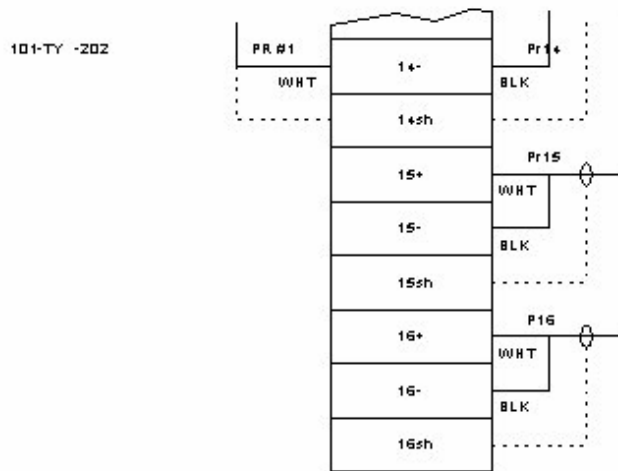
Field	Value
Terminal configuration	Regular
Terminal	OAS
Right terminal	
Sequence	73
Terminal color	
Right terminal color	
Panel	12PS-JB-I12
Terminal strip	12PS-I12-1
Channel	
Type	Dble Lvl
Manufacturer	
Model	



Creating new Symbols

- ◆ Test the new Symbol by running the appropriate Enhanced Report.

Before



After (with new Symbol in place)

