

Process, Power and Marine Division

SmartPlant Explorer (SPEx) 2007

Alex Koifman, SmartPlant Explorer Product Manager
August 21, 2007



What is it

Internet based engineering data viewing tool

4.1 and post release history – 1 of 2

- SPEx 4.1 released on April 25, 2005, supporting SPI 7 and SPPID 4.2. Support for Windows 2003 server added.
- 2006/2007 – product transferred to IISDC with consolidation of schematic development. Transition of the development is now completed. Transition of support will occur with completion of the certification of the new v.5 release and IISDC will be providing second line support.

4.1 and post release history – 2 of 2

- No 4.1 SP's released because there was no need for a major packaged solutions, most were resolved on as needed basis with clients.
- Minor changes made to support SPI 2007 and SPPID 2007 which it does now.

2007 release

- Release: Q4 2007
- Main theme: Improved usability
- Tool support
 - 2007 tools release support (SPI and SPPID);
 - Addition of SPEL data browsing
 - SPPID display set
 - Allow user to make the result of graphic report display bold (PDS2D and SPPID)
 - Support multiple SPPID projects with the same name
 - IDEAL installation Wizard (part of SPI 2007 installation)
 - SPI tree view information administration (on, off and reset when 100's of domains exists)

2007 release - continued

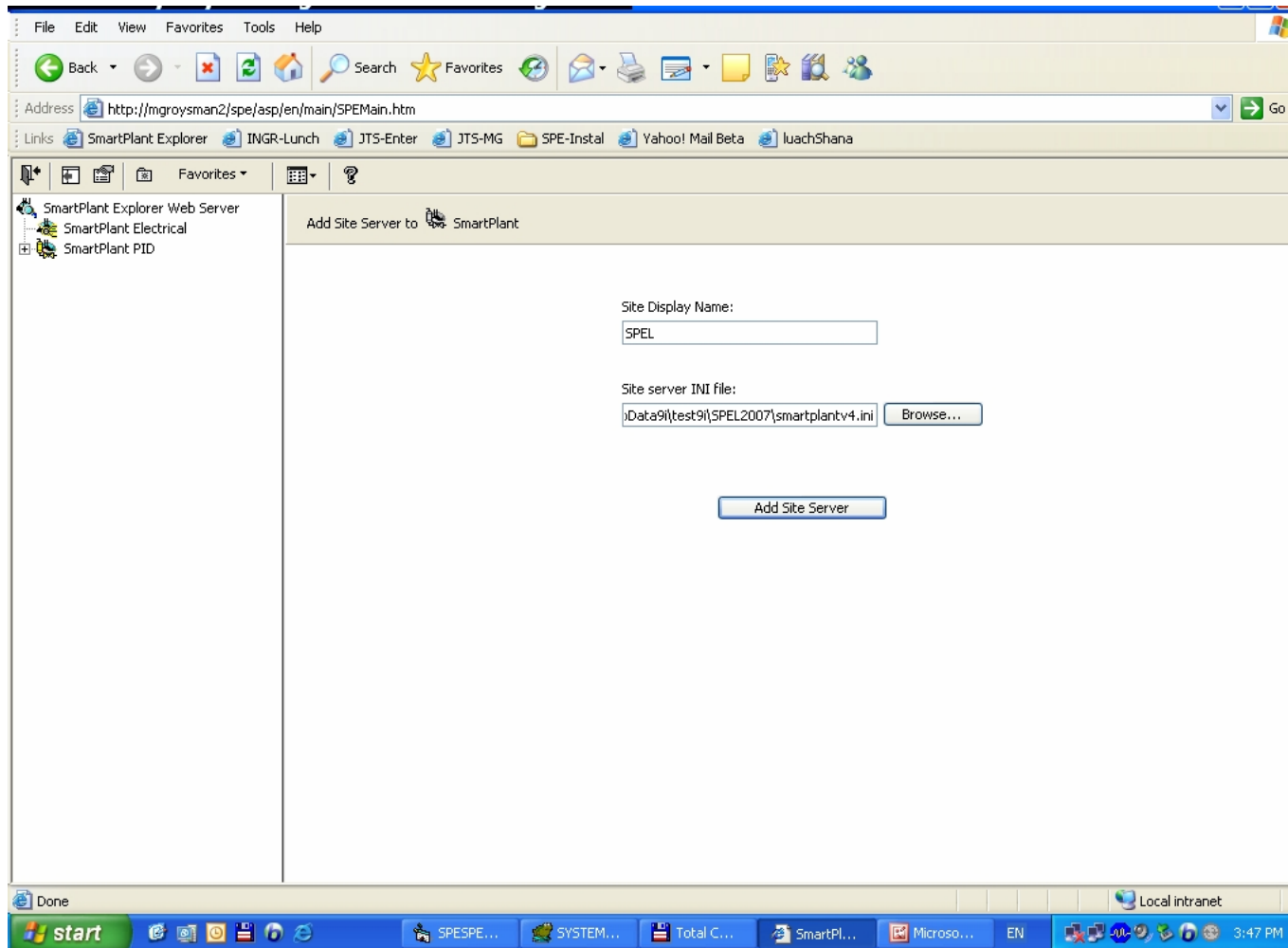
■ General improvements

- Improved stability and reliability (package different used to configure and run SPEX)
- SPEX and SPI server communication changed from HTTP to TCP/IP reducing need for additional IIS configuration and improving stability, works via proxy
- Support IE7, Office 2007 and Vista.
- Favorites administration
- Including already resolved TR's and additional ones
- Intermodular Wizard (simplify creating a actions to automatically navigate from one application to another, e.g. jump from instrument in SPPID to SPI's report)

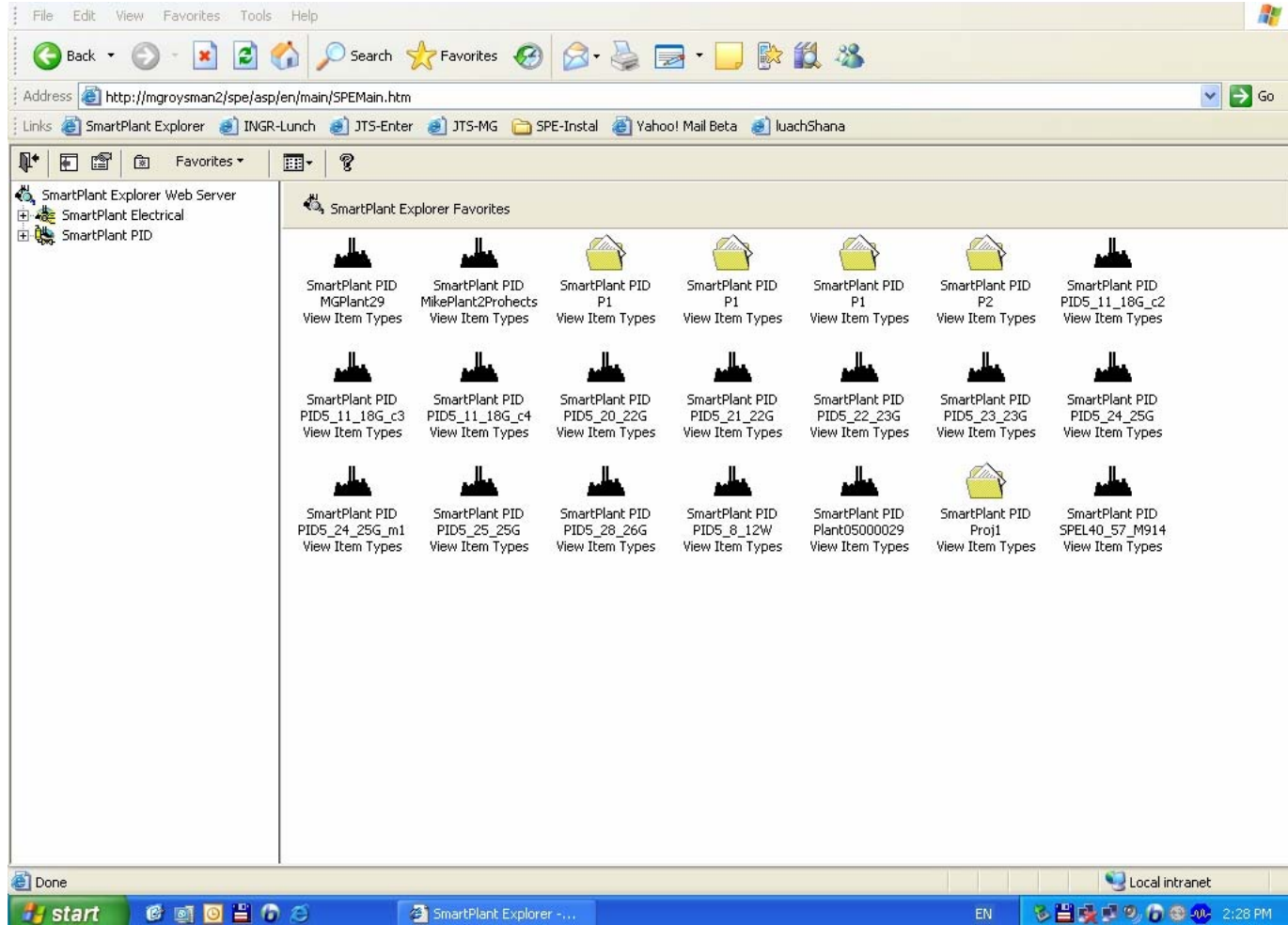
Addition of SPEL support

- As SmartPlant Electrical is making very good progress within I&E communities
- Both EPC's and owner operators embark on implementations
- SPEL user specifically see it critical to deliver electrical data to non-editing casual users: supervisors, maintenance planners, techs, etc
- First phase includes data browsing.

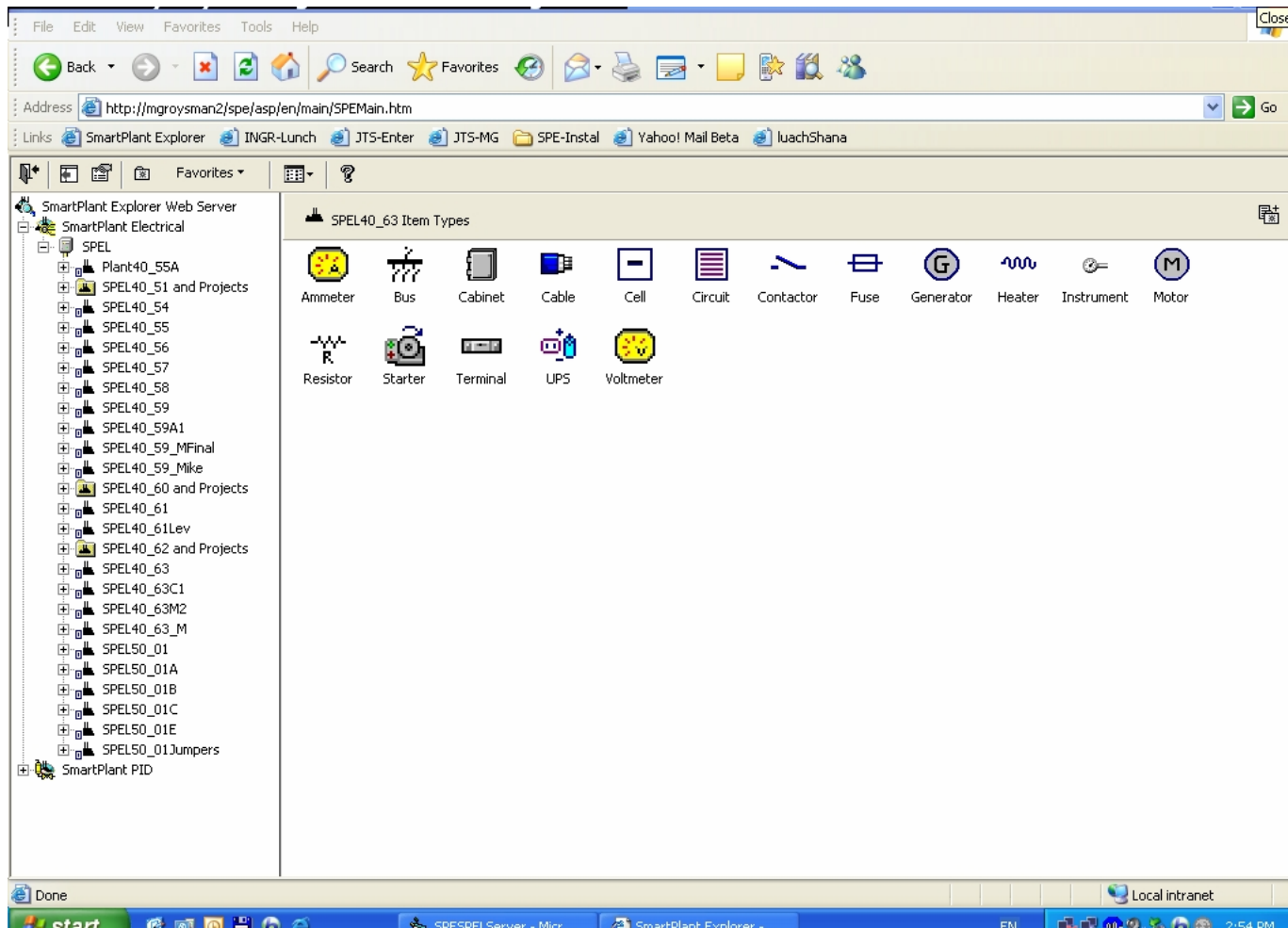
Adding a SPEL plant



SmartPlant plant list



SPEL Item type list



Sample report

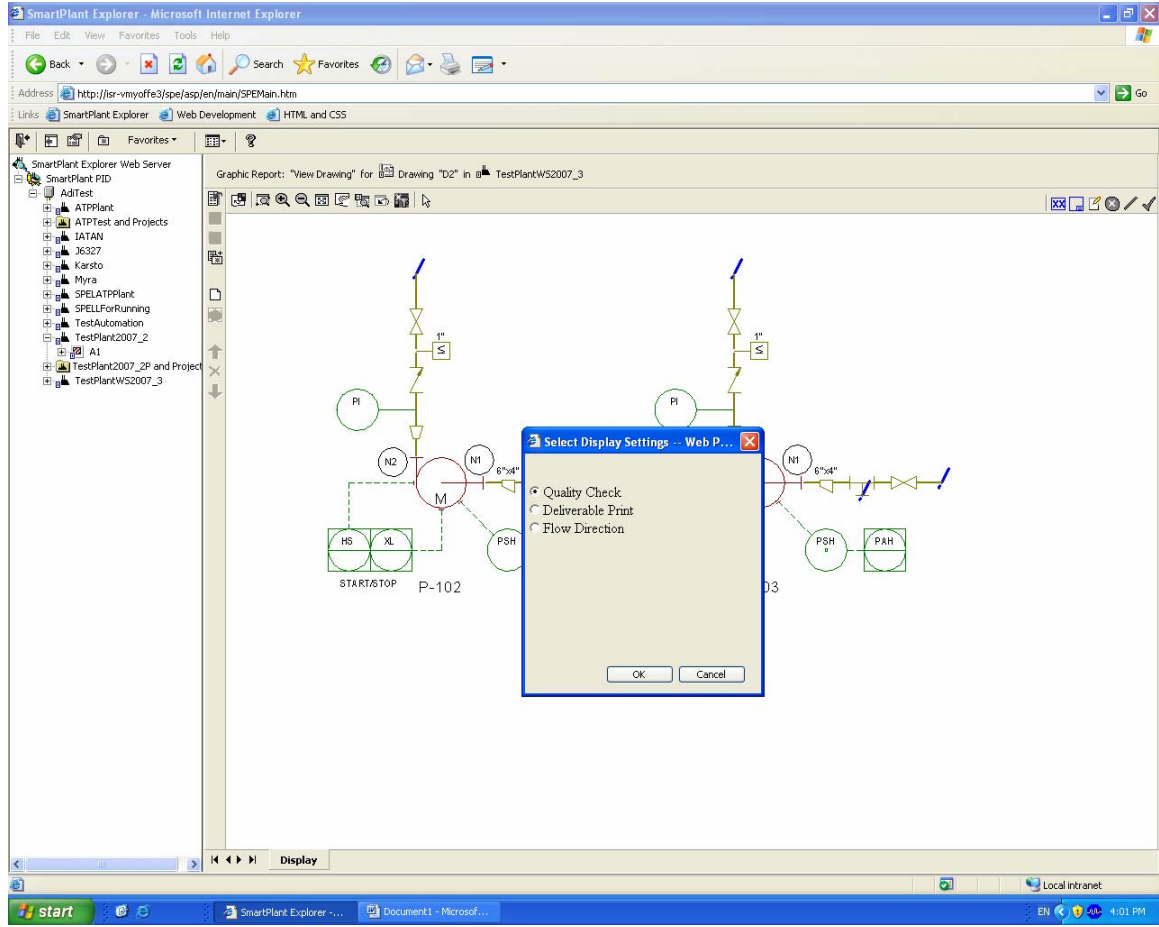
Report: "new" of Item Type: Cable in SPEL40_63

Cable Category	Cable Set Type	Cable Specification
Power		Power - mm2
Power		Power - mm2
Power		Power - mm2
Power		Power - mm2
Power		Power - mm2
Power		Power - mm2
Power		Power - mm2
Power		Power - mm2
Power		Power - mm2
Power		Power - mm2
Control		Control
Grounding		Grounding
Control		Control
Grounding		Grounding
Control		Control
Grounding		Grounding
Control		Control

First row is 1 of 24 items; displaying 15 items at a time

Report Results | Definition | Name | Access | Applies To

SPPID display sets



Favorites administration – 1 of 2

SmartPlant Explorer Favorites

Application	Connection	Class	Users	Name
No filter			No filter	
<input type="checkbox"/> PDS PID	SHOALS(Master)	Project	Administrator, Viewer	PDS PID/SHOALS(Master)/View Item Types
<input type="checkbox"/> PDS PID	SHOALS(Task)	Drawing	All users	PDS PID/SHOALS(Task)/Drawing 38-E-0001/View Drawing
<input type="checkbox"/> PDS PID	SHOALS(Task)	Drawing	All users	PDS PID/SHOALS(Task)/Drawing 39-E-0001/View Drawing
<input type="checkbox"/> PDS PID	SHOALS(Task)	Drawing	Administrator	PDS PID/SHOALS(Task)/Drawing 41-E-0001/View Drawing
<input type="checkbox"/> PDS PID	SHOALS(Task)	Project	All users	PDS PID/SHOALS(Task)/View Item Types
<input type="checkbox"/> Dummies		SPE	All users	SmartPlant Explorer Web Server/View Applications
<input type="checkbox"/> SmartPlant Instrumentation	Gopi/PROFERTIL/PROFERTIL	Plant	All users	SmartPlant Instrumentation/Gopi/PROFERTIL/PROFERTIL/View Item Types
<input type="checkbox"/> SmartPlant Instrumentation	New Refinery (As Built)	Tag	All users	SmartPlant Instrumentation/New Refinery (As Built)/Tag/Search Tag Index
<input type="checkbox"/> SmartPlant Instrumentation	SPEMSSQL/SOLVAY/Green River Operations (As Built)	Plant	All users	SmartPlant Instrumentation/SPE//MS//SQL/SO//LV//AY/Green River Operations (As Built)/View Item Types
<input type="checkbox"/> SmartPlant Instrumentation	SPEMSSQL/SOLVAY/Green River Operations (As Built)	Plant	All users	SmartPlant Instrumentation/SPE//MS//SQL/SO//LV//AY/Green River Operations (As Built)/View Item Types
<input type="checkbox"/> SmartPlant Instrumentation	SPEMSSQL/HARVEST/New Refinery (As Built)	Plant	All users	SmartPlant Instrumentation/SPEMSSQL/HARVEST/New Refinery (As Built)/View Item Types
<input type="checkbox"/> SmartPlant Instrumentation	SPEMSSQL/HARVEST/New Refinery (South 40)	Plant	All users	SmartPlant Instrumentation/SPEMSSQL/HARVEST/New Refinery (South 40)/View Item Types
<input type="checkbox"/> SmartPlant Instrumentation	SPEMSSQL/SOLVAY/Green River Operations (T-200)	Plant	All users	SmartPlant Instrumentation/SPEMSSQL/SOLVAY/Green River Operations (T-200)/View Item Types
<input type="checkbox"/> SmartPlant Instrumentation	SPEMSSQL/SOLVAY/Green River Operations (T-50)	Plant	All users	SmartPlant Instrumentation/SPEMSSQL/SOLVAY/Green River Operations (T-50)/View Item Types
<input type="checkbox"/> SmartPlant Instrumentation	Version 6 & test/SHOALS/Shoals	Plant	All users	SmartPlant Instrumentation/Version 6 & test/SHOALS/Shoals/View Item Types
<input type="checkbox"/> SmartPlant Instrumentation			All users	SmartPlant Instrumentation/View Sites
<input type="checkbox"/> SmartPlant PID	Africa	RootPlant	All users	SmartPlant PID/Africa/View Item Types
<input type="checkbox"/> SmartPlant PID	Harvest	RootPlant	All users	SmartPlant PID/Harvest/View Item Types
<input type="checkbox"/> SmartPlant PID	Plant 3	RootUserDefined	All users	SmartPlant PID/Plant 3/View Item Types
<input type="checkbox"/> SmartPlant PID	Plant1	Drawing	All users	SmartPlant PID/Plant1/Drawing 38-pi-001/View Drawing
<input type="checkbox"/> SmartPlant PID	Plant1	PipeRun	All users	SmartPlant PID/Plant1/Pipe Run/Search Pipe Runs 196WS
<input type="checkbox"/> SmartPlant PID	Plant1	PipeRun	All users	SmartPlant PID/Plant1/Pipe Run/Search Pipe Runs 196WS
<input type="checkbox"/> SmartPlant PID	Plant1	RootPlant	All users	SmartPlant PID/Plant1/View Item Types
<input type="checkbox"/> SmartPlant PID	Plant5	RootPlant	All users	SmartPlant PID/Plant5/View Item Types
<input type="checkbox"/> SmartPlant PID	Sector2	RootBusiness Sector	All users	SmartPlant PID/Sector2/View Item Types
<input type="checkbox"/> SmartPlant PID	Shoals	Drawing	All users	SmartPlant PID/Shoals/Drawing 38-E-0001/View Drawing
<input type="checkbox"/> SmartPlant PID	Shoals	Drawing	All users	SmartPlant PID/Shoals/Drawing/Search Drawings
<input type="checkbox"/> SmartPlant PID	Shoals	Equipment	All users	SmartPlant PID/Shoals/Equipment/FOR EXTERNAL CALL TESTING
<input type="checkbox"/> SmartPlant PID	Shoals	RootPlant	All users	SmartPlant PID/Shoals/View Item Types
<input type="checkbox"/> SmartPlant PID	South_Africa	RootPlant	All users	SmartPlant PID/South_Africa/View Item Types
<input type="checkbox"/> SmartPlant PID			Administrator, User	SmartPlant PID/View Sites

Favorites administration – 2 of 2

Filter by drop down or field

Application	Connection	Class
No filter		
PDS PID	SHOALS(Master)	Project
PDS PID	SHOALS(Task)	Drawing
PDS PID	SHOALS(Task)	Drawing
PDS PID	SHOALS(Task)	Drawing
PDS PID	SHOALS(Task)	Drawing

Application	Connection	Class	Users
No filter			No filter
PDS PID	SHOALS(Master)	Project	Administrator, Viewer
PDS PID	SHOALS(Task)	Drawing	All users
PDS PID	SHOALS(Task)	Drawing	All users
PDS PID	SHOALS(Task)	Drawing	Administrator
PDS PID	SHOALS(Task)	Project	All users
Dummies		SPE	All users
SmartPlant Instrumentation	Gopi/PROFERTIL/PROFERTIL	Plant	All users
SmartPlant Instrumentation	New Refinery (As Built)	Tag	All users
SmartPlant Instrumentation	SPEMSSQL/SOLVAY/Green River Operations (As Built)	Plant	All users
SmartPlant Instrumentation	SPEMSSQL/SOLVAY/Green River Operations (As Built)	Plant	All users

VBScript: SmartPlant Explorer

These are the actions you have selected to delete. Continue?

- SmartPlant Instrumentation/SPE//MS//SQL/SO/LV//AY/Green River Operations (As Built)/View Item Types
- SmartPlant Instrumentation/SPEMSSQL/HARVEST/New Refinery (As Built)/View Item Types
- SmartPlant Instrumentation/SPEMSSQL/HARVEST/New Refinery (South 40)/View Item Types

Yes No

2008 release and beyond

- Release: Q2 2008 (same time as all products)
- Main theme: Minor release because of the limited time. Scope of the release is being developed. Planned support of SPEL drawings.
- For 2009 will review improvements of the technology to allow using some parts and components developed for SPF Web client.
- No longer planning to merge SPEx into SPF, more likely to evolve into Web enabled portal